

## Winter Resources February 2026



### Power/Electricity Preparedness

- Be prepared for potential power outages as a result of winter weather. Consider having back up generators available for your home in order to keep the heat on.
- Be careful with candles, fireplaces and space heaters, as they all pose a fire-safety risk. Don't leave these unattended!
- Make sure you keep windows and doors closed to keep the cold out! If you have problems with the seals on your door frames or windows, contact the *Weatherization Assistance Program* for subsidized assistance.

### Good Neighbor Energy Fund (GNEF)

The GNEF is a program run by United Way of Rhode Island. The program is funded by public donations and support from local businesses, community partners and individuals. For more information regarding eligibility for the program, visit: <https://www.unitedwayri.org/gnef/>.

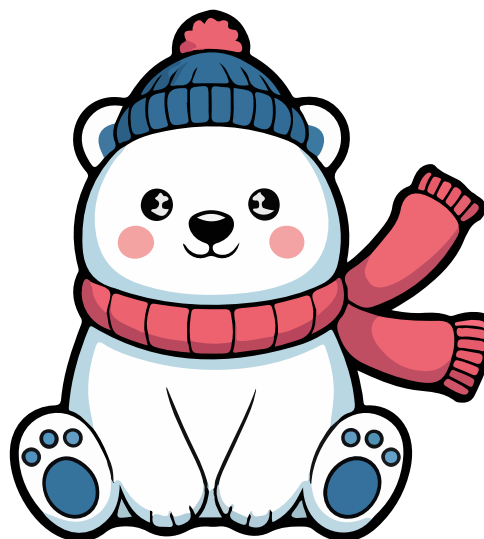
### Heating Assistance

#### Low Income Heating Assistance Program (LIHEAP)

The Low-Income Heating Assistance Program provides assistance with heating and energy bills. Applications for new registrants began in October. Eligibility is based on household income. SNAP recipients typically also qualify for LIHEAP. Find your local Community Action Agency: <https://ricommunityaction.org/>

#### Weatherization Assistance Program (WAP)

WAP helps low-income households reduce heating bills by providing whole house energy efficiency. Tenants and homeowners are eligible for weatherization. Assistance is available year-round, and households can pre-qualify through LIHEAP. Find your local Community Action Agency: <https://ricommunityaction.org/>



## Preparing for Winter February 2026



### Shelter

#### Subsidized Housing

The Section 8 Housing Choice Voucher Program & the Section 8 Subsidized Apartment Rental Assistance Program are federal programs that assist families, seniors, and individuals with disabilities afford safe, healthy homes in their communities. Waiting lists exist for both forms of housing. Applicants can apply through RI Public Housing Authority at <https://www.rihousing.com/public-housing-authorities/>.

#### Regional Access Points (RAPs)

Regional Access Points provide individuals and families at imminent risk of homelessness, or experiencing homelessness, with centralized, easy-to-access entry points to housing-related services, including case management, housing navigation, emergency shelter, mental health and substance use services, and other critical resources. The goal is to prevent homelessness and/or facilitate individuals' transition from homelessness to stable housing and improved well-being. If someone you know needs immediate shelter, visit: <https://housing.ri.gov/resources/individuals-experiencing-homelessness>.

### Clothing Assistance

#### Clothes to Kids RI

The mission of Clothes to Kids RI is to provide new and quality used clothing to low-income or in-crisis, school-age children in Providence County, Rhode Island—free of charge. For information about eligibility, visit <http://clothestokidsri.org/referral-process/#eligibility>

#### Christian Hill Community Church Closet

Christian Hill Community Church offers free clothing to those in need year-round. They also partner with the Red Cross to provide clothing to fire victims that have been displaced. For more information, visit <https://www.christianhill.com/outreach/>.

### Additional Assistance

#### United Way Rhode Island

With a 24/7 hotline and chat service, as well as offices across the state, United Way assists Rhode Island residents with a variety of needs, including shelter and utility needs during the winter. For more information, visit <https://www.unitedwayri.org/get-help/2-1-1/>.

